

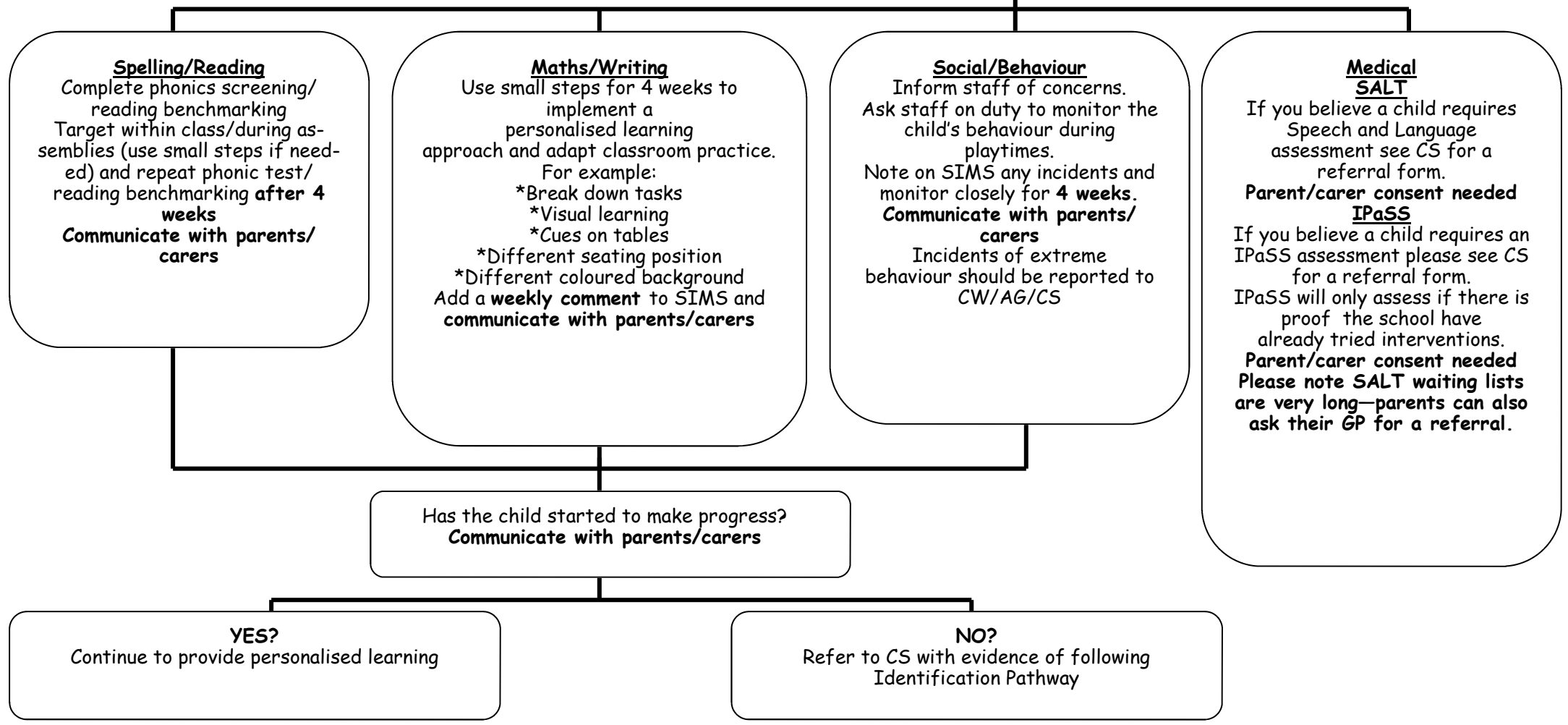


SEND Identification Pathway

Cause for Concern
Enter a note on SIMS under child's name in the SEN section. Include concern and pupil's current levels.

Inform parents/carers of your concern
Get them on board!
Suggest ways in which they can support at home.

Add meeting with parents/carers on to SIMS; include date and meeting notes.
What is the outcome of the meeting?
See CS to gain advice on strategies



Spelling/Reading
Complete phonics screening/
reading benchmarking
Target within class/during as-
semblies (use small steps if need-
ed) and repeat phonic test/
reading benchmarking **after 4
weeks**
**Communicate with parents/
carers**

Maths/Writing
Use small steps for 4 weeks to
implement a
personalised learning
approach and adapt classroom practice.
For example:
*Break down tasks
*Visual learning
*Cues on tables
*Different seating position
*Different coloured background
Add a **weekly comment** to SIMS and
communicate with parents/carers

Social/Behaviour
Inform staff of concerns.
Ask staff on duty to monitor the
child's behaviour during
playtimes.
Note on SIMS any incidents and
monitor closely for **4 weeks**.
**Communicate with parents/
carers**
Incidents of extreme
behaviour should be reported to
CW/AG/CS

Medical
SALT
If you believe a child requires
Speech and Language
assessment see CS for a
referral form.
Parent/carers consent needed
IPaSS
If you believe a child requires an
IPaSS assessment please see CS
for a referral form.
IPaSS will only assess if there is
proof the school have
already tried interventions.
Parent/carers consent needed
Please note **SALT** waiting lists
are very long—parents can also
ask their GP for a referral.

Has the child started to make progress?
Communicate with parents/carers

YES?
Continue to provide personalised learning

NO?
Refer to CS with evidence of following
Identification Pathway